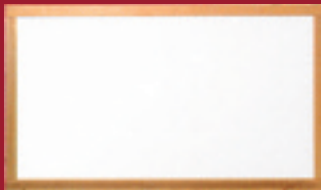


Space Age Technology for your Home

Models and Specifications:



XLargewave

Model	Connected Load	Dimensions	Size of Room Heated*
Megawave	1100 W	79" x 32" x 0.5"	300 sq. ft.
XLargewave	900 W	47" x 28" x 0.5"	220 sq. ft.
Largewave	600 W	40" x 24" x 0.5"	150 sq. ft.
Tallwave	300 W	40" x 15" x 0.5"	80 sq. ft.
Middlewave	280 W	24" x 20" x 0.5"	75 sq. ft.

*for well insulated rooms

Technical Data:

Surface: Enamelled Steel (scratch-proof and acid resistant)

Heating Element: virtually free of electrosmog

Surface Temperature: max. 90°C, 194°F

Supply Voltage: 120V, 60 Hz

Power Consumption: 280 to 1100 Watt

Accessories: Plug in or in-line thermostats

Tested and approved to: CSA & UL specifications

Glass Units



- Familiar Redwell technology
- Frameless!
- Hidden Mounting brackets



Construction:

- 1 Heating Element
- 2 Heat Accumulator (non-combustible natural product)
- 3 Enamelled Steel Surface (scratch and acid resistant)



This brochure was supplied by:



www.redwell.ca



Heating the way it should be.

Bring The Sun Inside:

Heating like the Sun

What is Infrared?

How is it possible, that warmth from the sun travels millions of miles through space and still manages to warm us? The reason for this phenomenon is electromagnetic waves which lie in the range just below (lat. infra) the red range of visible light. These waves cause molecules to oscillate, thus freeing up energy which we perceive as warmth. Unlike shorter wavelengths such as microwaves, infrared waves have a very positive effect on the human organism. Redwell gives us warmth, just as it should be.

The Advantages of Redwell Infrared Heaters



Objects and walls stay dry and give off warmth.

Infrared heat has a positive effect on humans.

Economical price and energy-saving operation.

The Difference is in the Air

Unlike traditional heating systems, Redwell heating units do not heat the air but the masonry. Walls can store heat for much longer periods of time than air can, and walls reflect the heat back into the room. Thus, the masonry remains dry and mould spores have no chance to spread. A further advantage to this type of heating is that the air is not circulated and dust is not spread about.

The Disadvantage of Traditional Heating



Damp air condenses on the walls, creates moulds and mildews, damaging masonry.

Circulating air brings up dust.

Temperature differences within the room cause draughts.



Nothing is as Individual as Redwell.

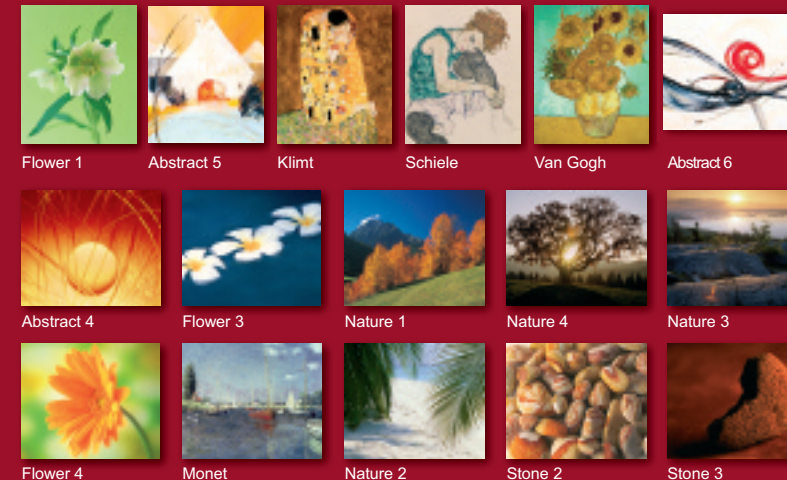
The Most Elegant Heater in the World.

In addition to the fact that you will save a considerable amount of energy with Infrared heating, the ease of installation, the lack of need for maintenance throughout the product's lifetime and the various installation options are convincing.

The heating elements are constructed so that they may be mounted with hidden brackets on any wall or on the ceiling. All you need is a power outlet.

A Variety of Designs

Redwell heating elements are available in 3 surface colors (white, red and blue), with various picture motifs and with a mirror surface. The frame may be ordered in chrome, aluminum, wood or in white.



Flower 1 Abstract 5 Klimt Schiele Van Gogh Abstract 6

Abstract 4 Flower 3 Nature 1 Nature 4 Nature 3

Flower 4 Monet Nature 2 Stone 2 Stone 3

You'll Love These Heaters.
People Need Warmth.

Infrared is Comfortable

Evolution created us in such a way, that we can absorb infrared heat and positively influence our immune system with it. Infrared heat penetrates the organism and warms the body from the inside out. Our products are CSA certified for Canada and the US and have been tested and found free of electrosmog and are completely safe.



Redwell is Budget-Friendly:

- No costs for a heating or storage room
- No chimney or sweeping costs
- Costs for purchasing / converting are low
- Long product-life without maintenance costs
- Energy-saving operation